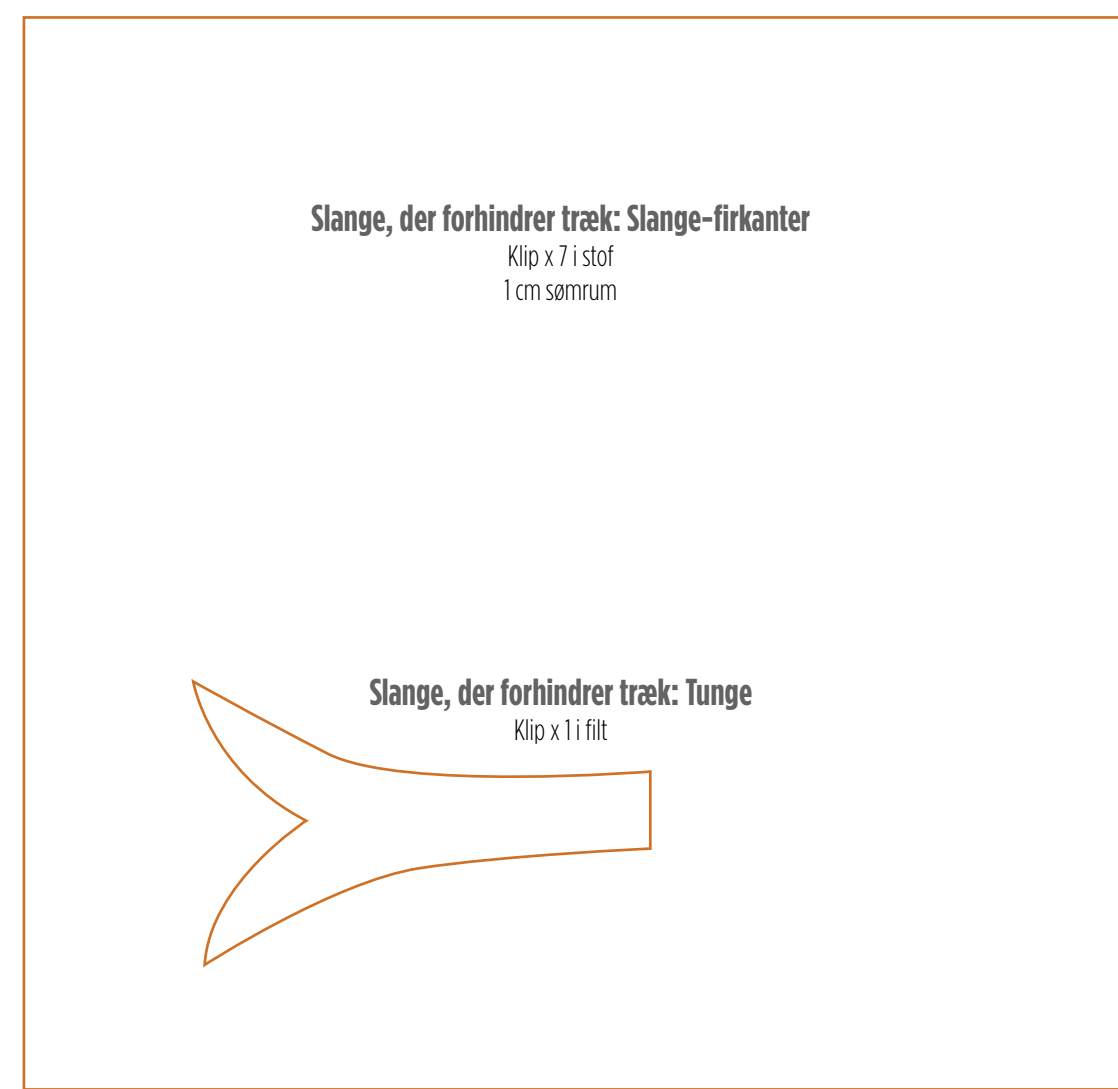
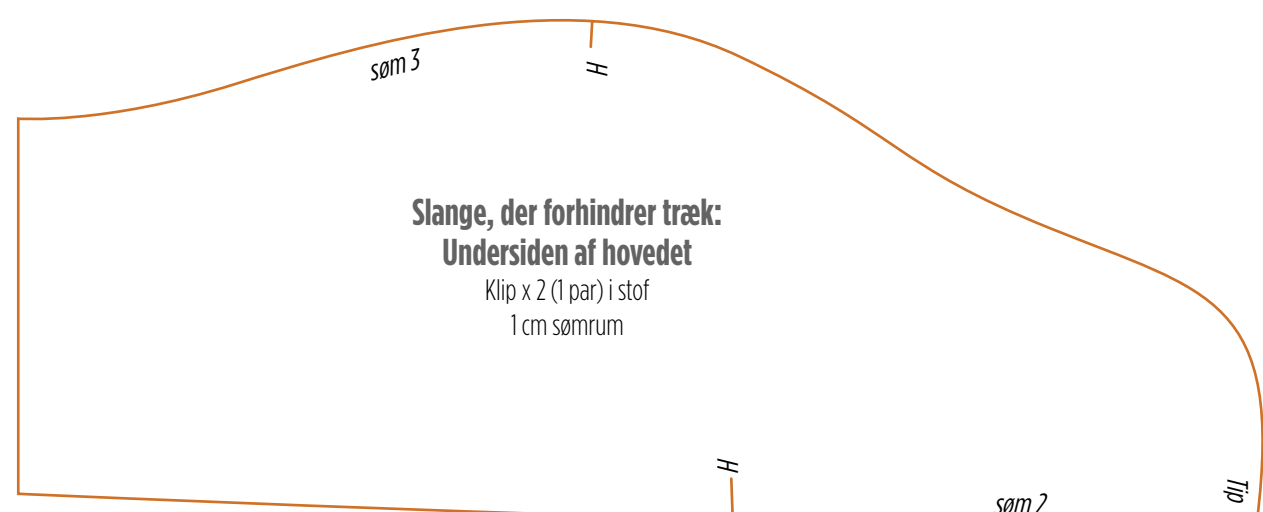


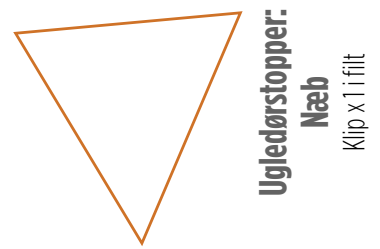
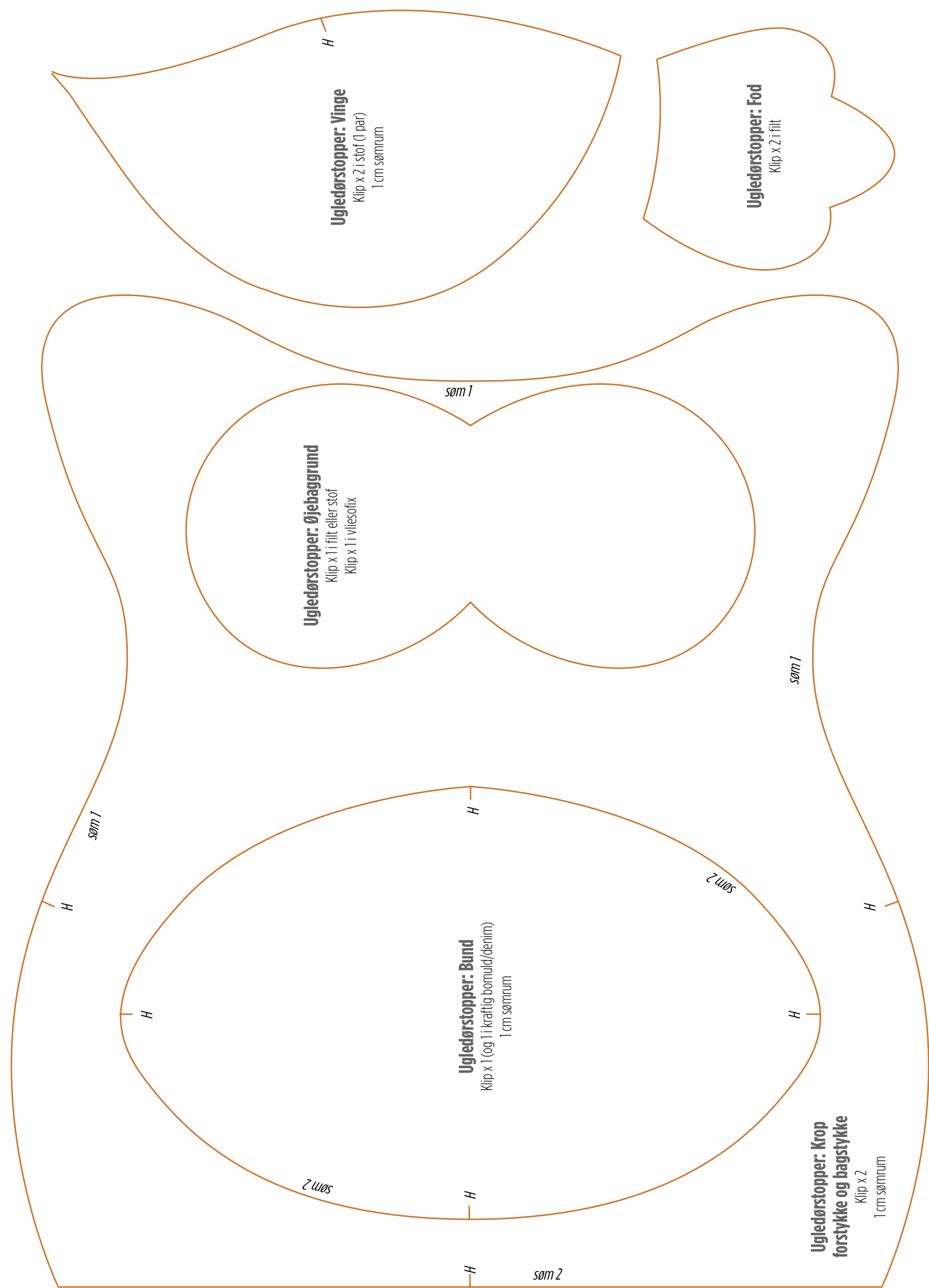
● **SLANGE, DER FORHINDRER TRÆK: 6 MØNSTERDELE** ●

100%



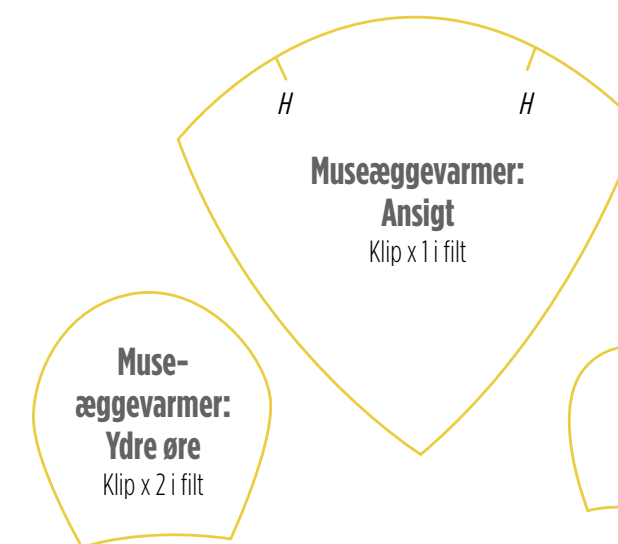
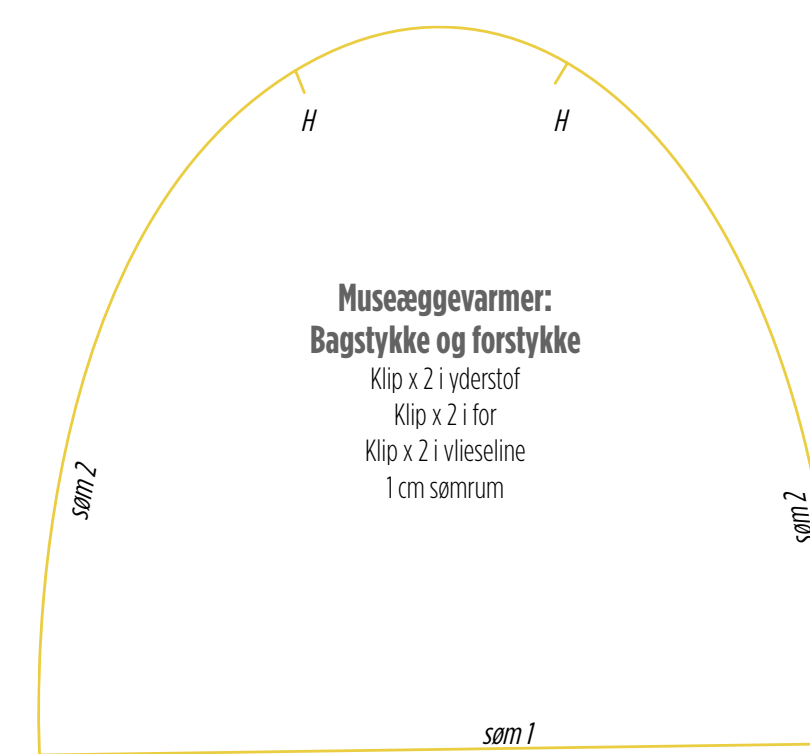
● **UGLEDØRSTOPPER: 6 MØNSTERDELE** ●

100%



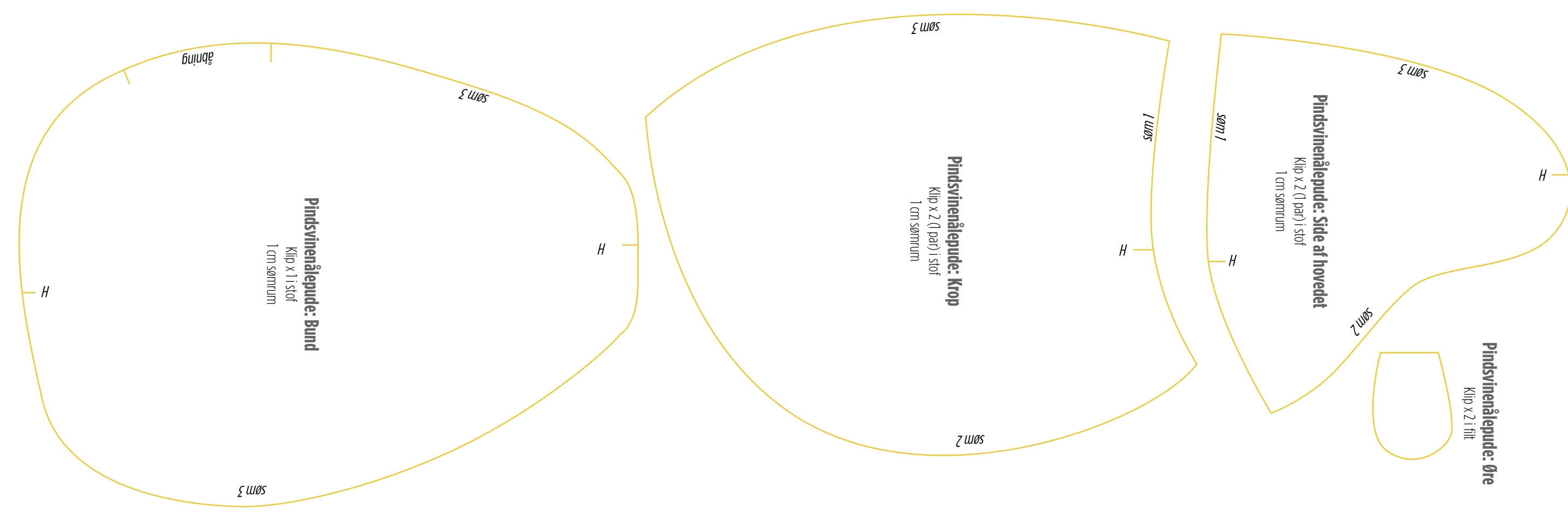
● **MUSEÆGGEVARMER: 5 MØNSTERDELE** ●

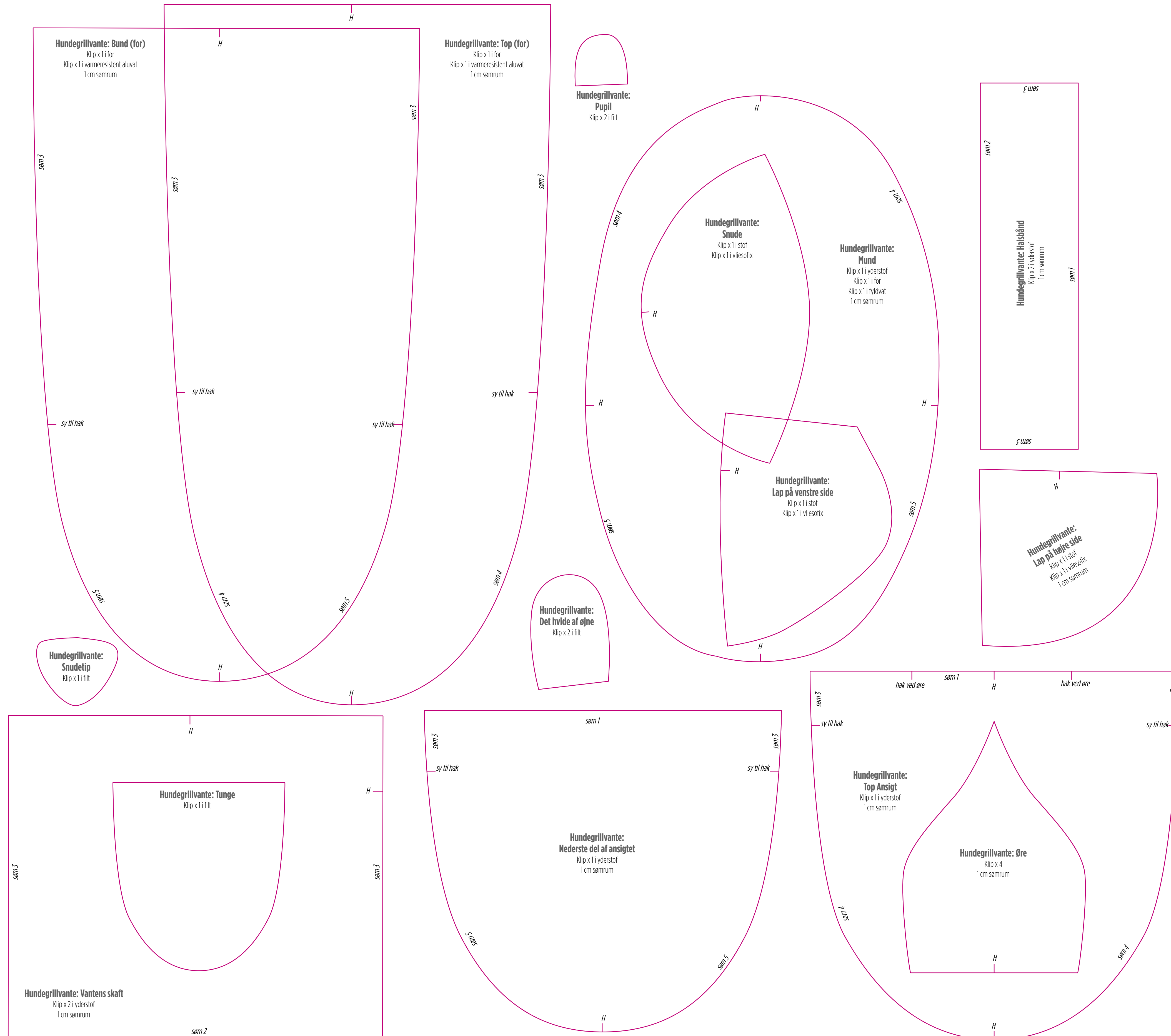
100%

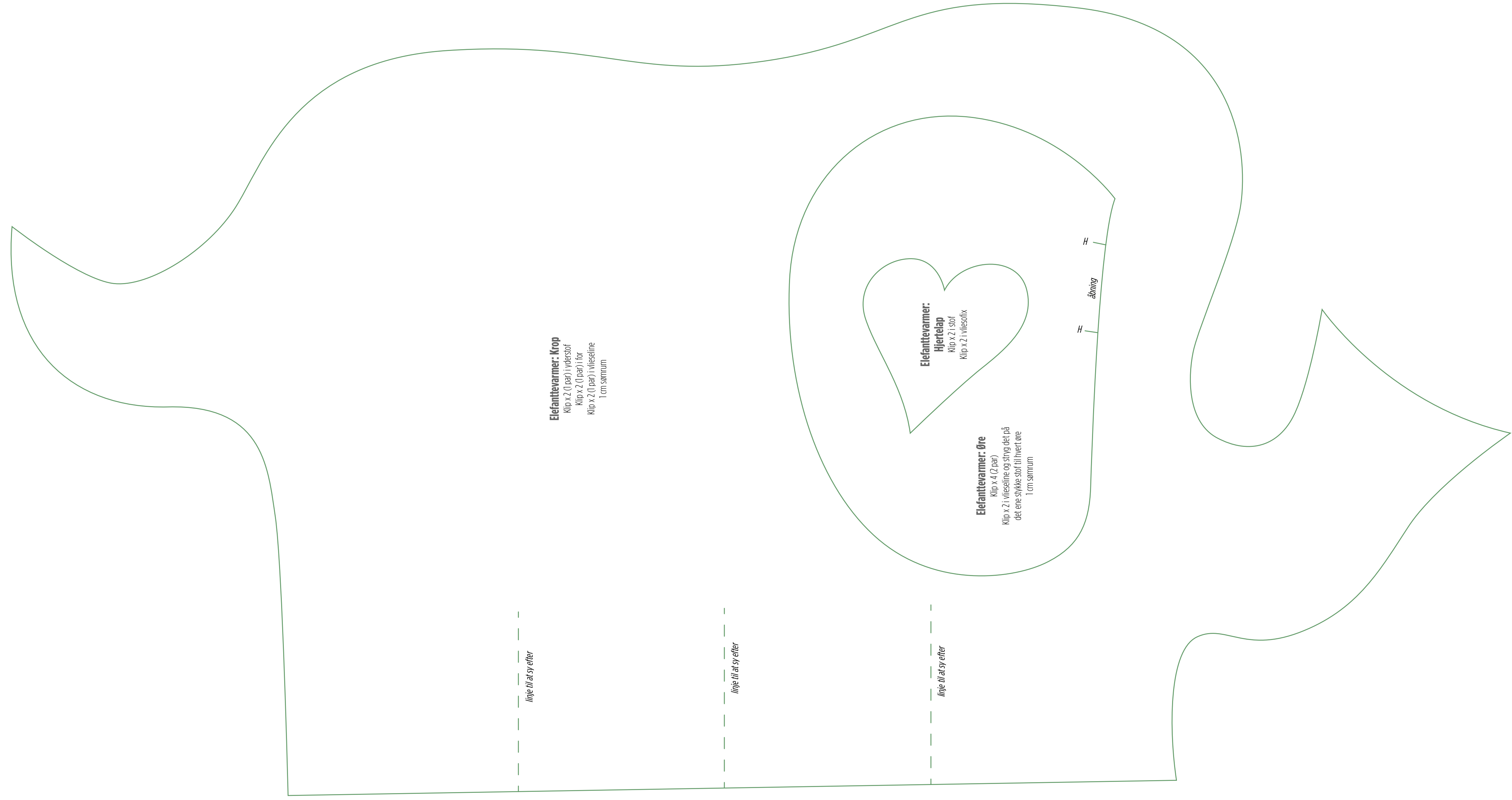


● **PINDSVINALEPUDE: 4 MØNSTERDELE** ●

100%







Elefantvarmer: Kropp
Klip x 2 (1 par) i voldsot
Klip x 2 (0 par) i for
Klip x 2 (1 par) i vildselne
1 cm sømrum

Elefantvarmer: Hjerterap
Klip x 2 i 304
Klip x 2 i vildselix

Elefantvarmer: Øre
Klip x 4 (2 par)
Klip x 2 i vildselne og strog det på
det ene stykke stof til hvert øre
1 cm sømrum

linje til at sy efter

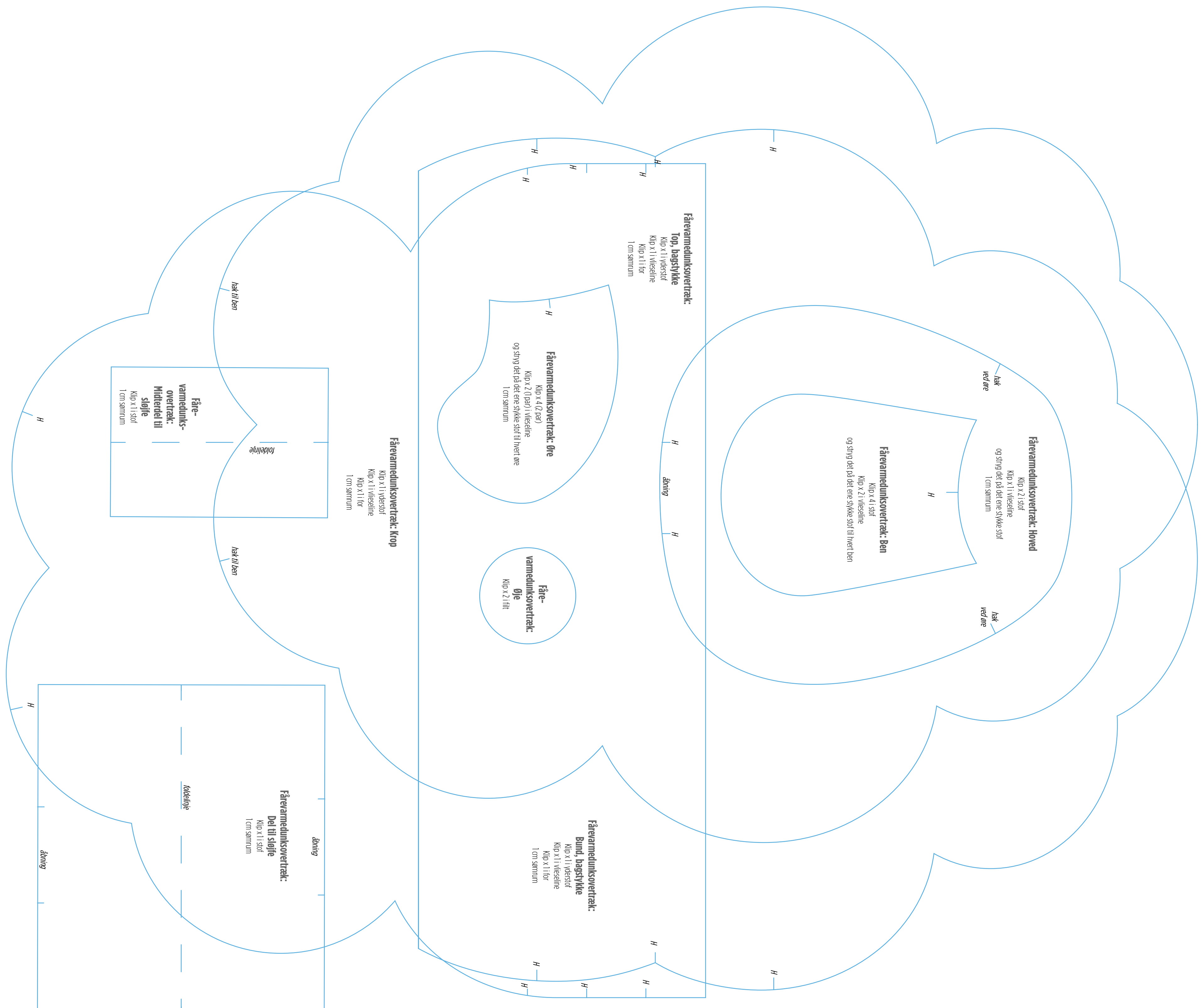
linje til at sy efter

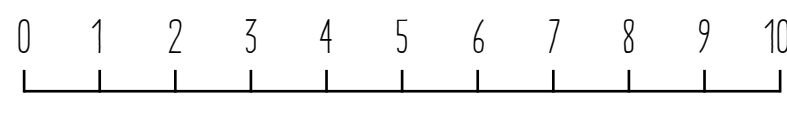
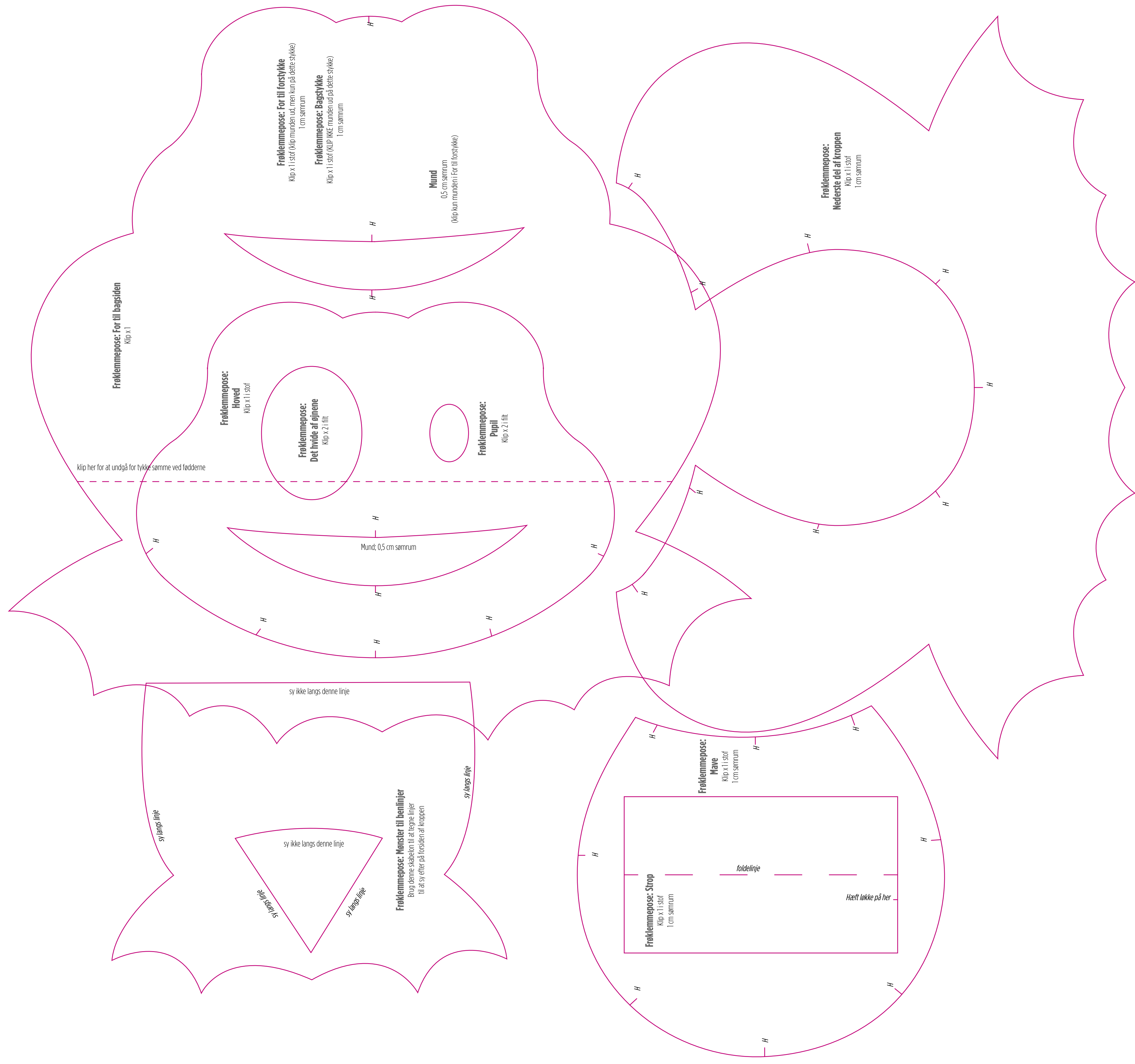
linje til at sy efter

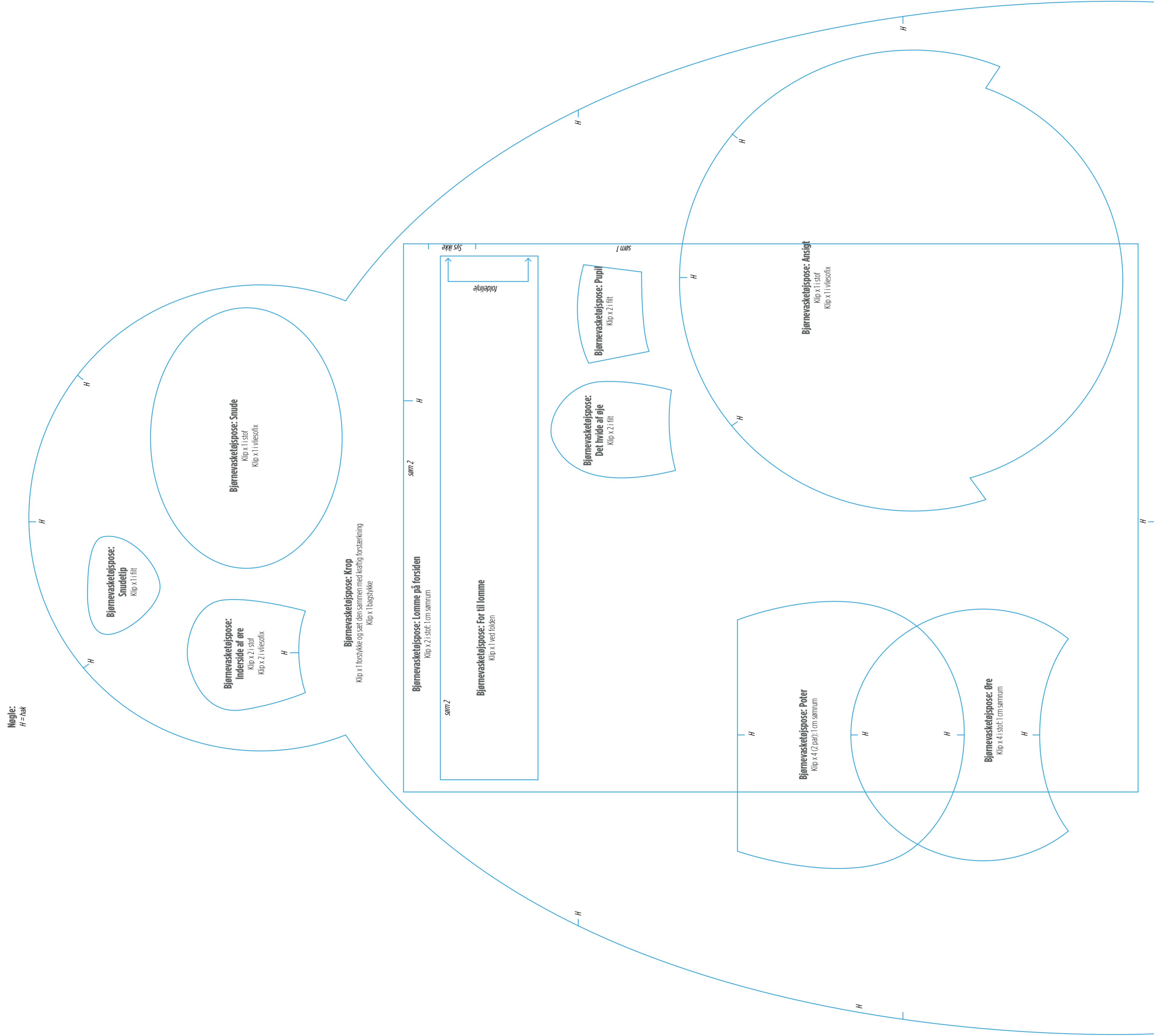
H

H

åbning

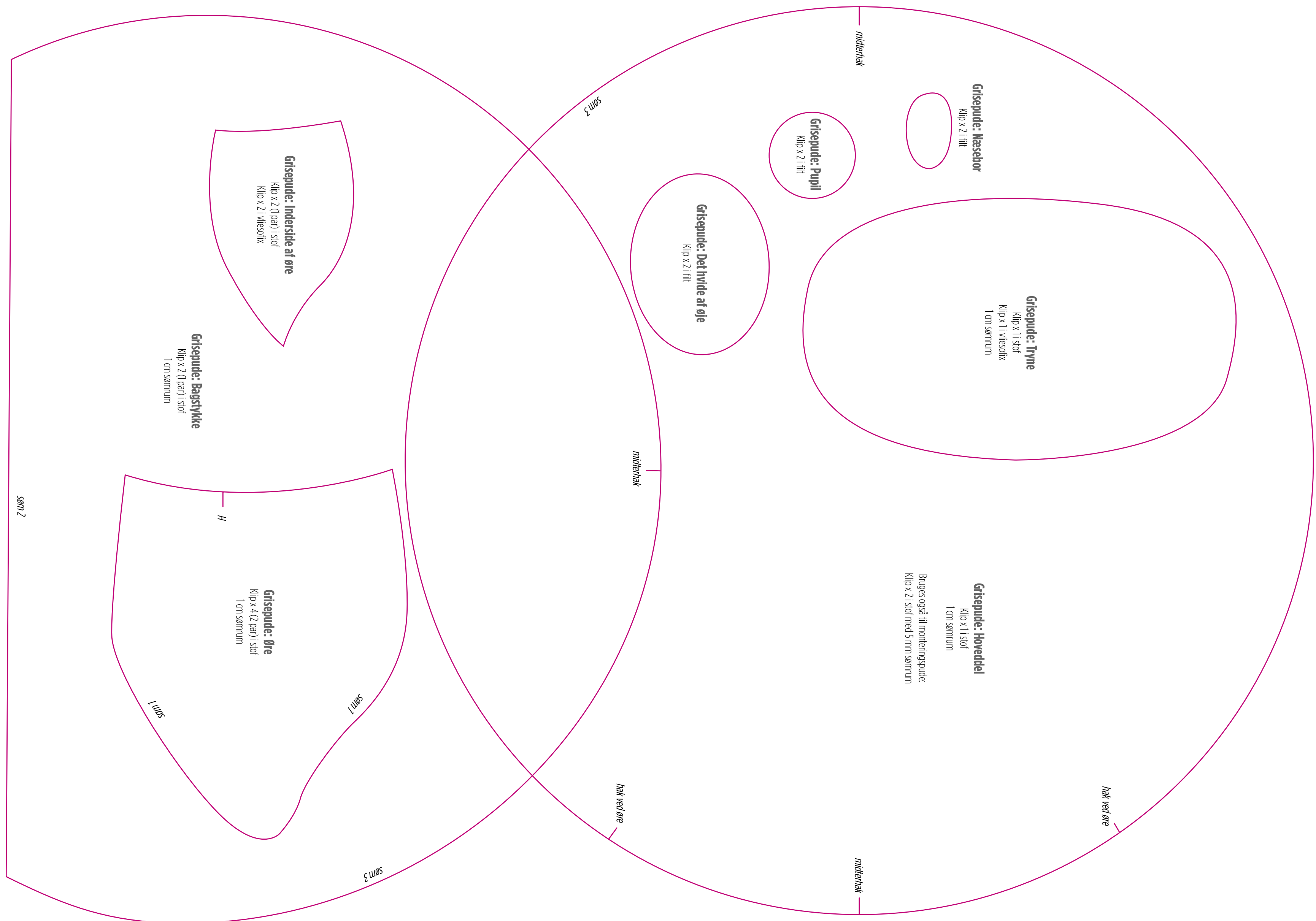


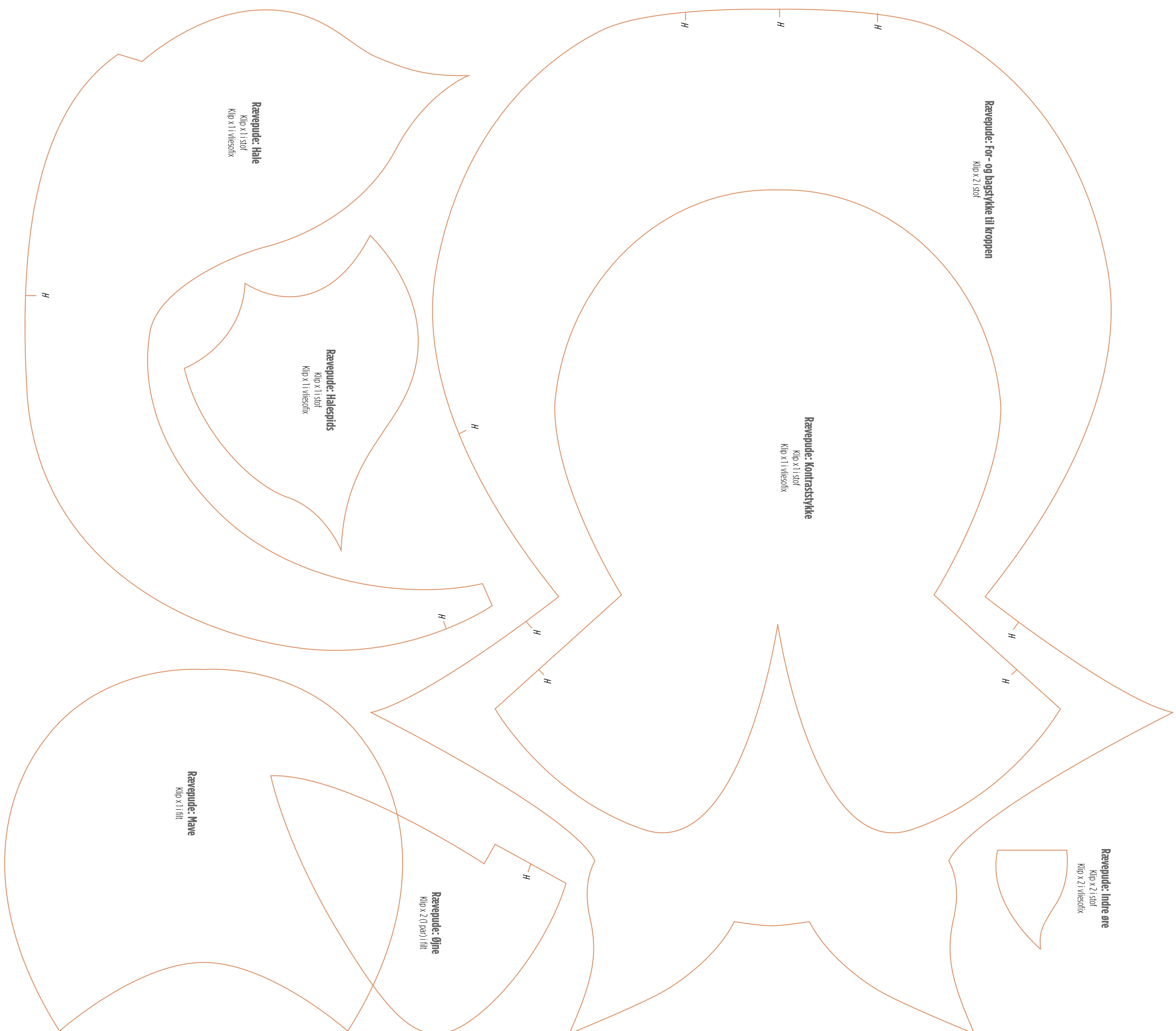




● GRISEPUDE: 8 MØNSTERDELE (BRUG MØNSTRET TIL SLØJFE
TIL FÅREVARMEDUNKOVERTRÆKKET, S. 89) ●

100%





SOMMERFUGLEDÆKKESERVJET & -GLASBRIK:
8 MØNSTERDELE (4 TIL HVER)

100%

